



Droplet and Contact Precautions



Hand hygiene



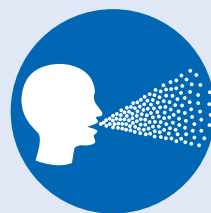
Gown



**Mask with
eye protection**



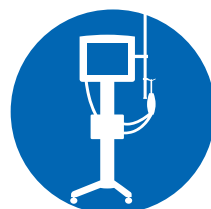
Gloves



**Protected
aerosolized
procedures apply**



**Keep door closed
(negative pressure
room if available)**



**Dedicated
equipment**



**2-stage terminal
cleaning**

Droplet & Contact Precautions

COVID-19

Enhanced Environmental Cleaning Chart

| | |
|----------------------------------|---|
| 2-stage terminal cleaning |  |
| Twice daily cleaning | |

